

Renegade ET 350iPA



Spare parts list

Ordering no.	Denomination	Note
0700 402 401	Renegade ET 350iPA	Welding power source, Non - CE
0448 690*	Renegade ET 350iPA	Instruction manual

Spare parts may be ordered through your nearest ESAB dealer, see esab.com. When ordering, please state product type, serial number, denominations and ordering numbers according to the spare parts list. This facilitates dispatch and ensures correct delivery.

Maintenance and repair work should be performed by an experienced person, and electrical work only by a trained electrician. Use only recommended spare parts.

For accessories to the product, see the instruction manual.

The three last digits in the document number of the manual show the version of the manual. Therefore they are replaced with * here. Make sure to use a manual with a serial number or software version that corresponds with the product, see the front page of the manual.

TABLE OF CONTENTS

1 SPARE PARTS 4

1.1 Housing module 4

1.2 PCB module 6

1.3 Setting panel module 9

1.4 Front and rear panel connections 10

1 SPARE PARTS

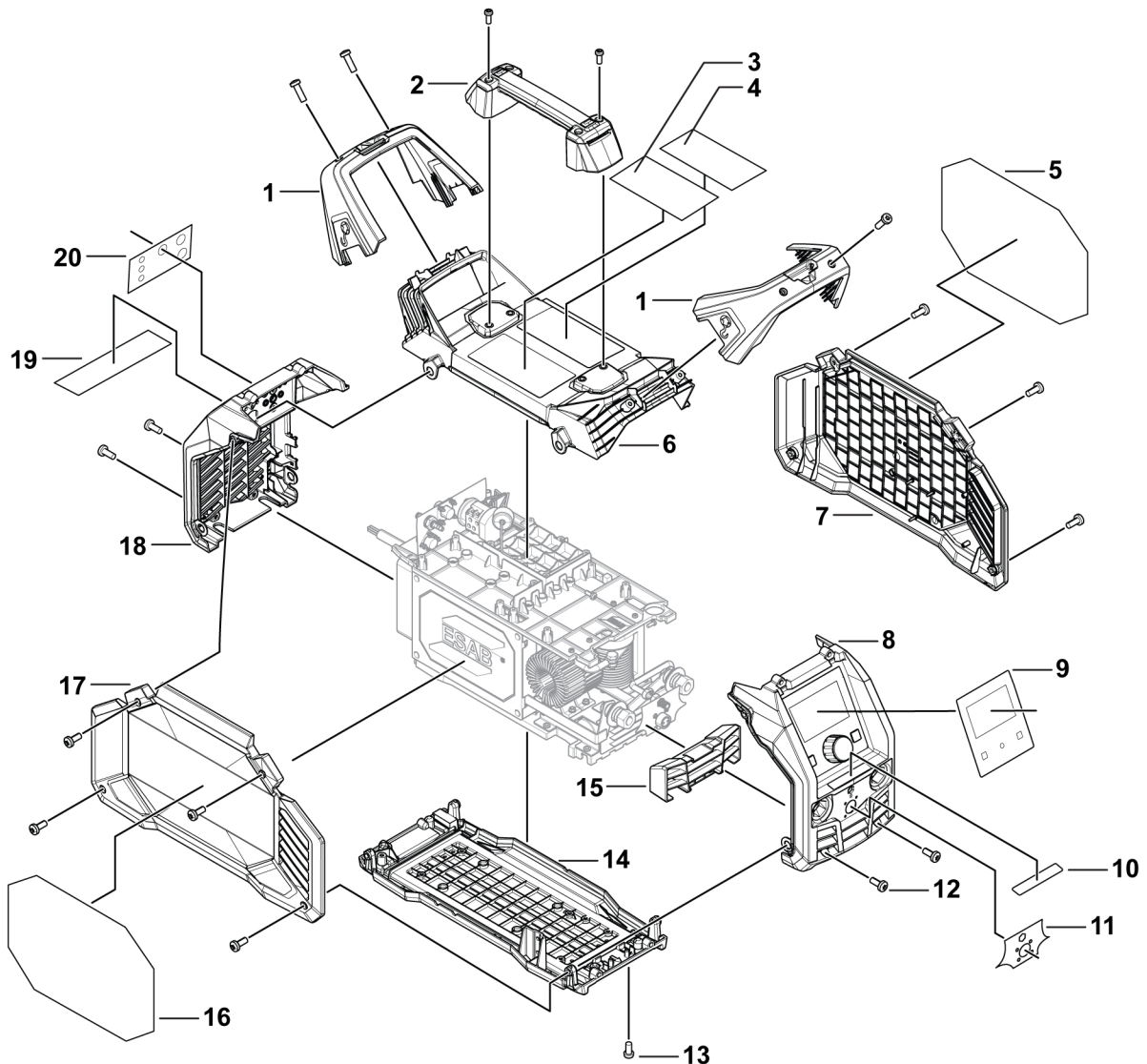
1.1 Housing module

C = Component designation in the circuit diagram

Item	Qty	Ordering no.	Denomination	Notes	C
1	2	0700 401 194	Handle cover	Including item 12 (4 no.)	
2	1	0700 401 193	Top handle kit	Including ESAB label, QR code label, item 12 (8 no.)	
3	1		Label, top warning, 1	See item 103	
4	1		Label, top warning, 2	See item 103	
5	1		Label, right panel, ESAB	See item 103	
6	1	0464 752 293	Top panel	with decals	
7	1	0464 752 289	Right panel	Including decals, item 13 (4 no.)	
8	1	0700 401 919	Front panel	See item 101	
9	1		Label, front panel, UI	See item 103	
10	1		Label, front panel, name	See item 103	
11	1		Label, front panel, torch and gas connection	See item 103	
12	12	0700 400 996	Screw	M4.8 × 16, black, self-tapping, torx.	
13	16	0700 400 995	Screw	M5 × 12, black, full thread, torx.	
14	1	0700 402 285	Bottom panel		
15	1	0700 401 819	IP shielding fence		
16	1		Label, left panel, renegade	See item 103	
17	1	0464 752 291	Left panel	Including decals, item 13 (4 no.)	
18	1	0465 950 002	Rear panel	See item 102	
19	1		Label, rear panel, rating plate, non-CE	See item 103	
20	1		Label, rear panel, remote and gas connection	See item 103	

1 SPARE PARTS

Item	Qty	Ordering no.	Denomination	Notes	C
101	1	0464 752 290	Front panel assembly	Including items 8, 13 (4 no.) OKC 50-70, 2 pin socket connector, gas connector and fasteners	
102	1	0464 752 292	Rear panel assembly	Including items 18, 13 (4 no.), power switch, gas connector, 8 pin socket connector, water cooler connector, input cable, stopping block	
103	1	0700 401 600	Label kit, Renegade ET350iPA, non-CE	Including items 3, 4, 5, 9, 10, 11, 16, 19, and 20	



1.2 PCB module

C = Component designation in the circuit diagram

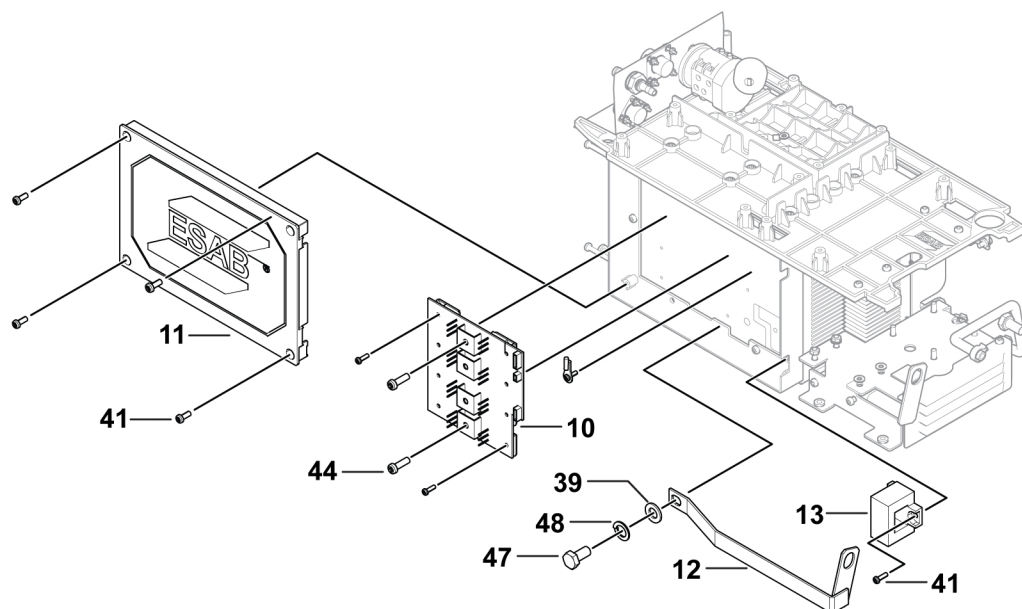
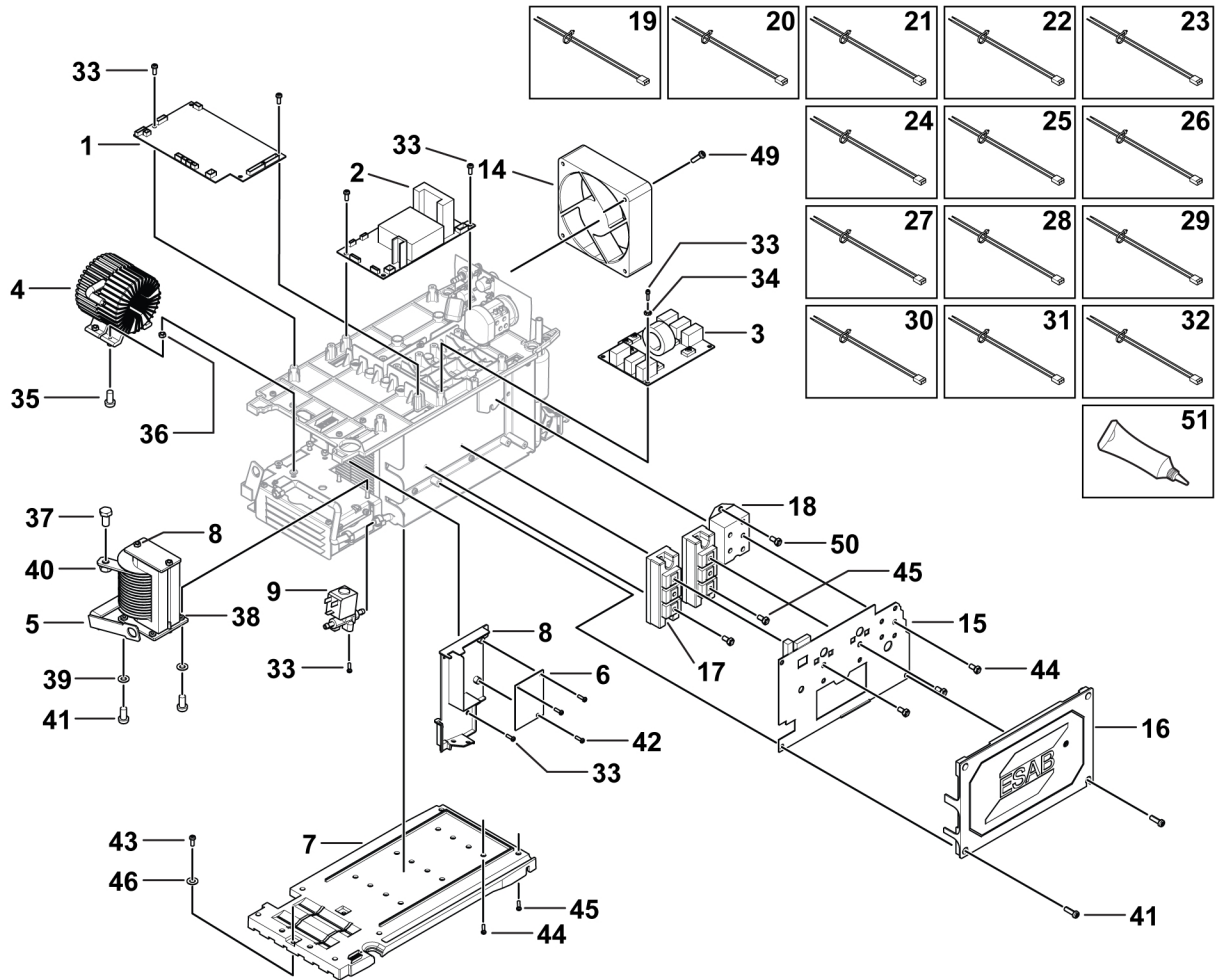
Item	Qty	Ordering no.	Denomination	Notes	C
1	1	0464 752 304	Control board	Including item 33 (4 no.)	20AP1
2	1	0464 752 305	Switching mode power board	Including item 33 (4 no.)	15AP3
3	1	0464 752 306	EMC PCBA	Including item 33 (4 no.), 34	2AP1
4	1	0464 752 307	Main transformer	Including items 35, 36	
5	1	0464 752 308	Inductor	Including items 37, 38, 39 (2 no.), 40, 41 (4 no.)	
6	1	0464 752 309	HF starter PCBA	Including items 42	
7	1	0700 402 284	Plastic support	Including item 43, 44 (8 no.), 45 (4 no.), 46	
8	1	0464 752 310	HF PCB plastic bracket	Including item 33 (4 no.)	
9	1	0464 752 311	Solenoid valve	Including item 33 (2 no.)	
10	1	0464 752 312	Secondary rectifier board	Including item 44 (4 no.)	27AP1
11	1	0700 402 282	Mur plastic cover	Including item 41 (4 no.)	
12	1	0464 752 313	Copper bar	Including items 47, 48, 39 (1 no.)	
13	1	0464 752 314	Hall sensor	Including item 41 (1 no.)	
14	1	0700 400 941	Fan, 0.61A, RUNDA	Including item 49	
15	1	0464 752 315	IGBT board	Including item 44 (9 no.)	15AP2
16	1	0700 402 283	IGBT plastic cover	Including item 41 (4 no.)	
17	2	0464 752 316	IGBT	Including item 45 (6 no.), item 51 to be ordered	
18	1	0464 752 317	Rectifier bridge	Including item 50, item 51 to be ordered	
19	1	0700 401 925	Harness, TIG trigger	Connection between P8 of control board to GUN switch	
20	1	0700 401 926	Harness, rectifier signal	Connection between P7 of control board to CN23 of booster board	
21	1	0700 401 928	Cable, water cooler	Connection between CN6 of power supply board to CN2 of water tank connector	
22	1	0700 401 929	Cable, bias power main control-01	Connection between CN3 of power supply board to P3 of control board	
23	1	0700 401 933	Harness, HF input	Connection between BYQ of HF board to BYQ1 and BYQ2 of power board	
24	1	0700 401 935	Harness, HF control	Connection between P4 of control board to HF of HF board	

1 SPARE PARTS

Item	Qty	Ordering no.	Denomination	Notes	C
25	1	0700 401 936	Harness, inverter driver	Connection between CN21 of power board to P5 of control board	
26	1	0700 401 937	Harness, water cooler	Connection between CN5 of switching power supply board to J1 of front display	
27	1	0700 401 938	Harness, input signal	Connection between CN1 of power supply board to CN20 of power board	
28	1	0700 401 939	Harness, display signal	Connection between J2 of display to P6 of control board	
29	1	0700 401 940	Cable, bias power main control-02	Connection between CN4 of power supply board to power 2 of control board	
30	1	0700 401 941	Harness, hall	Connection between hall sensor to IF of booster board	
31	1	0700 401 944	Harness, output feedback	Connection between DYOUT of filter board to WV1 of control board	
32	1	0700 401 945	Harness,remote control	Connection between P9 of control board to remote control	
33	26		Screw	M4 × 8 (Including flat washer, spring washer)	
34	2		Washer, flower	M4 × 8	
35	4		Screw	M4 × 14 (Including flat washer, spring washer)	
36	4		Nut	M4	
37	1		Screw, external hexagon	M8 × 20	
38	2		Washer, spring	M8	
39	3		Washer, flat	M8	
40	1		Nut	M8	
41	13		Screw	M4 × 10 (Including flat washer, spring washer)	
42	3		Screw	M3 × 6 (Including flat washer, spring washer)	
43	2		Screw	M4 × 16 (Including flat washer, spring washer)	
44	21		Screw	M5 × 10 (Including flat washer, spring washer)	
45	10		Screw	M5 × 16 (Including flat washer, spring washer)	
46	2		Washer, flat	M5	
47	1		Screw, external hexagon	M8 × 16	
48	1		Washer, spring	M8	

1 SPARE PARTS

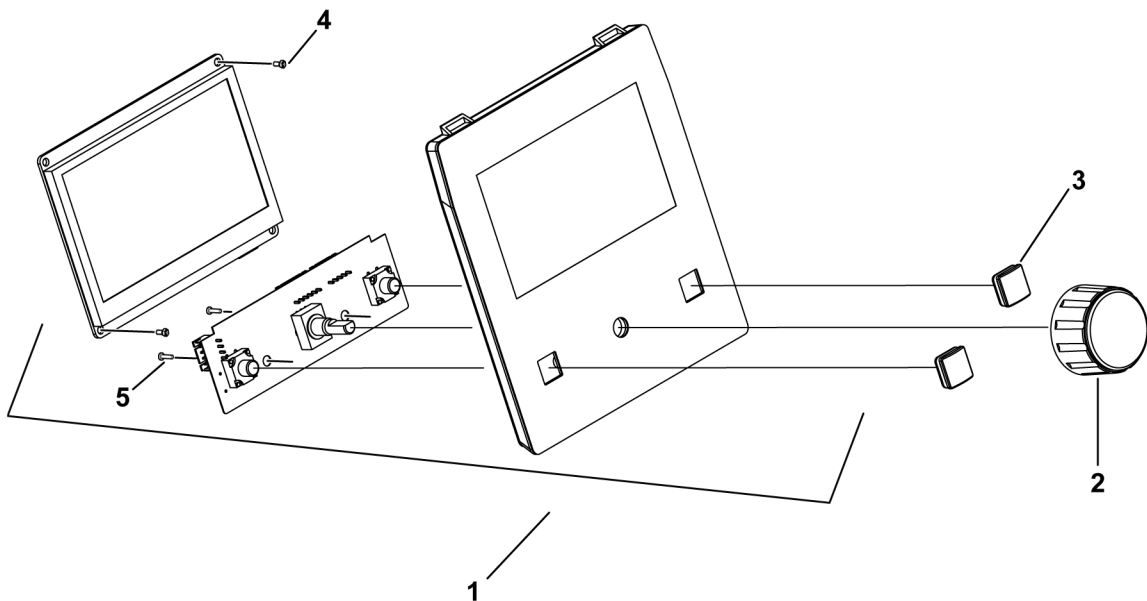
Item	Qty	Ordering no.	Denomination	Notes	C
49	4		Screw	M4 × 45 (Including flat washer, spring washer)	
50	2		Screw, external hexagon	M5 × 10 (Including flat washer, spring washer)	
51	1	0349 313 348	Paste, thermal		



1.3 Setting panel module

C = Component designation in the circuit diagram

Item	Qty	Ordering no.	Denomination	Notes	C
1	1	0464 752 294	TFT display kit	Including TFT board, plastic frame, cover with decals, double side tap and wirings, item 4, 5	1AP1
2	1	0700 402 281	Encoder knob		
3	2	0464 752 298	Rubber button		
4	2		Screw, cross round head	M2.5 × 5	
5	2		Screw	M3 × 8 (Including flat washer, spring washer)	

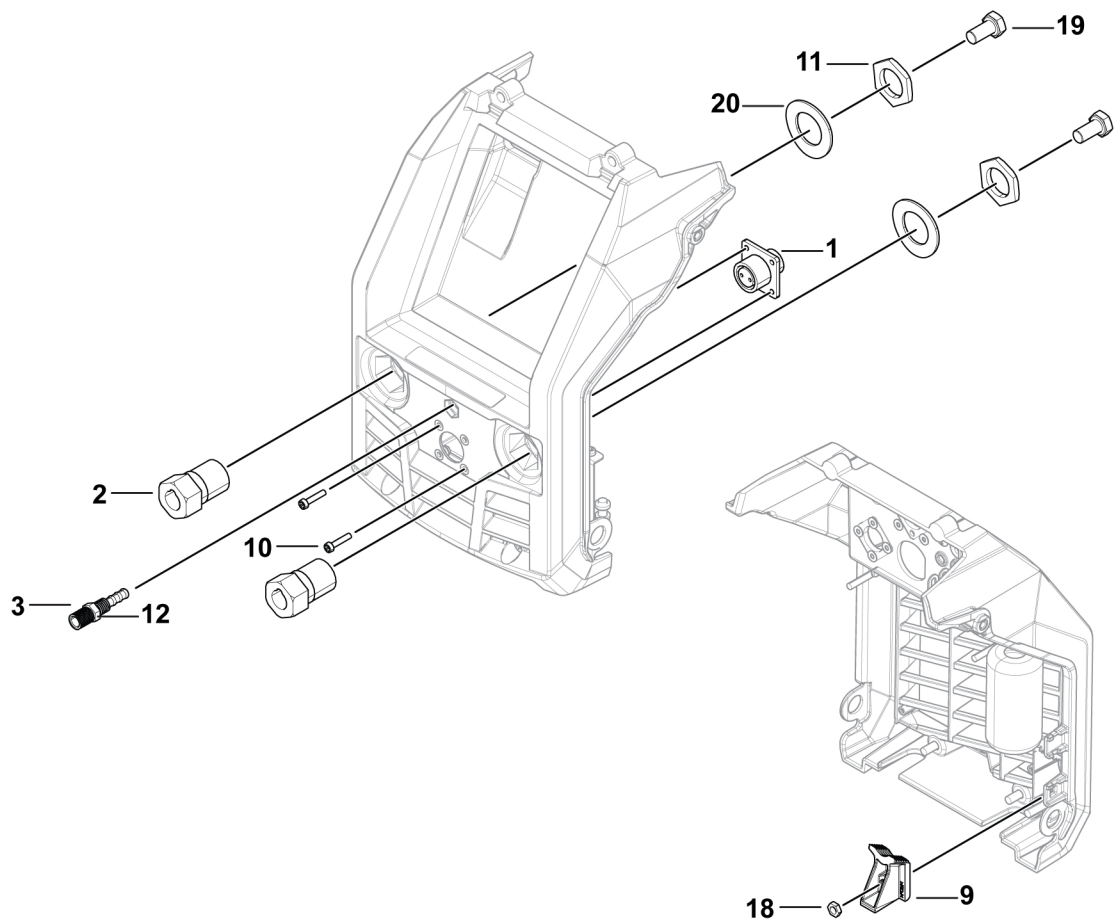
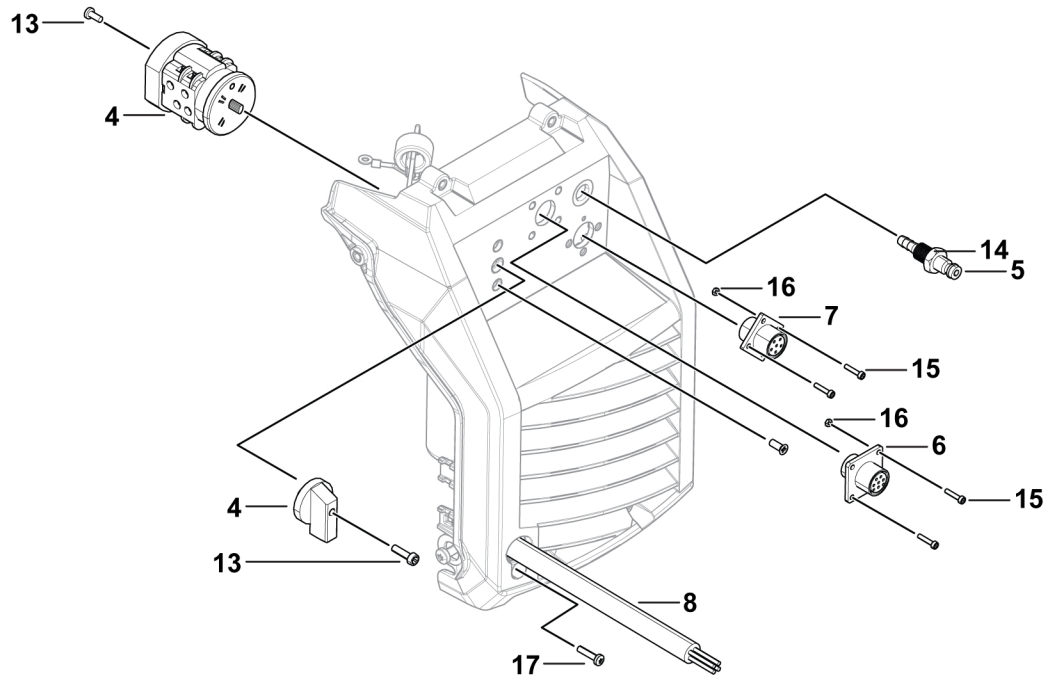


1.4 Front and rear panel connections

C = Component designation in the circuit diagram

Item	Qty	Ordering no.	Denomination	Notes	C
1	1	0464 752 296	2 pin socket connector	Including item 10	
2	2	0464 752 295	OKC 50-70	Including screw, washer, nut and item 11	
3	1	0464 752 297	Gas connector	Including item 12	
4	1	0464 752 299	Power switch, LW26-25	Including item 13	
5	1	0464 752 300	Gas connector	Including item 14	
6	1	0464 752 301	8 pin socket connector	Including item 15 (4 no.), 16 (4 no.)	
7	1	0464 752 302	Water cooler connector	Including item 15 (4 no.), 16 (4 no.)	
8	1	0464 752 303	Input cable, 4mm ² , 4m	Without plug, Including item 17	
9	1	0464 538 001	Stopping block	Including item 18	
10	4		Screw, sharp self tapping, black	M3.5 × 9.5	
11	2		Nut, external hexagon	M20	
12	1		Nut	M8	
13	2		Screw, countersunk, black	M4 × 12	
14	1		Nut	M10	
15	8		Screw, torx, black	M2.5 × 12	
16	8		Nut	M2.5	
17	1		Screw, torx, black	M5 × 30	
18	1		Nut	M5	
19	2		Screw, hexagonal head	M8 × 16	
20	2		Washer, flat	M20	

1 SPARE PARTS





A WORLD OF PRODUCTS AND SOLUTIONS.



For contact information visit [esab.com](https://www.esab.com)

ESAB AB, Lindholmsallén 9, Box 8004, 402 77 Gothenburg, Sweden, Phone +46 (0) 31 50 90 00

manuals.esab.com

